

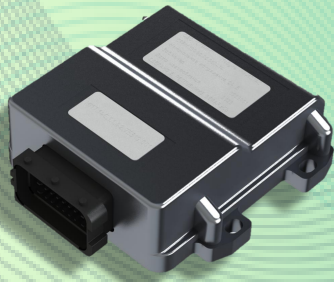


MULTIPURPOSE CONTROL UNIT MI-17



The module is designed to control over various electronic components of vehicles and mobile machines.

Key features:

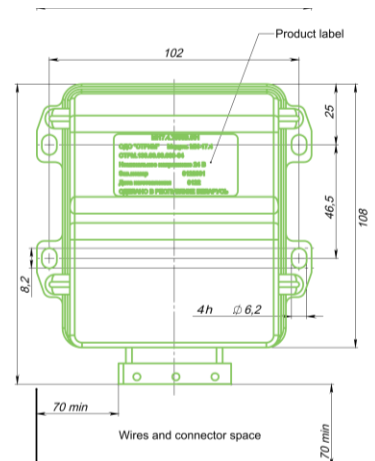
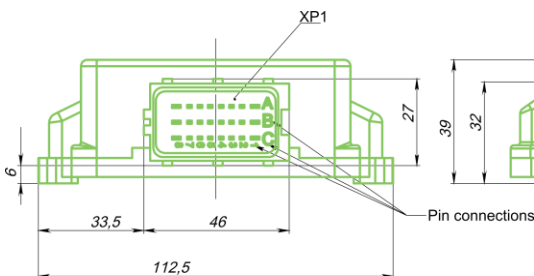


- 8 universal configurable inputs (of discrete, analog (0...5 V, 0...24 V) and counting types).
- 8 discrete outputs with overload and open circuit detection.
- Flexible adjustment and easy setup with the KN-1 software kit.
- IP54 protection.

General information

Parameter	Value
Supply voltage range, V	8...32
Rated voltage, V	12 or 24
Max power, W	192
Number of CAN	1
Number of universal inputs	8
Number of discrete outputs (+24 V, 2 A)	8
Weight, g	300
Degree of protection (GOST 15150-69)	IP54

Dimensions



Block Diagram

Supply voltage
8 ... 32 V.
Overvoltage/reversed polarity protected

Inputs (8 total)

Discrete,
configurable

Analog
0 ... 24 V; 0 ... 5 V

Counter
0,1 Hz ... 30 kHz

Outputs (8 total)

Discrete,
Up to 2 A

Configuration input for
operating two units in a
system

Input for connecting
the terminator to the
CAN bus

Micro-
controller

Interface

CAN

KERNEL

Processor	32-bit, ARM Cortex-M4, 128 MHz
Processor flash	3072 kByte
Processor RAM	192 kByte

INPUTS

Universal inputs	8x total, each can be configured as discrete, analog (voltage range 0...5 or 0...24 V) or counter (0,1 Hz ... 30 kHz)
------------------	---

OUTPUTS

Universal outputs	8x total, each can be configured as discrete or analog (max. current 2 A)
-------------------	---

INTERFACES

CAN	1x CAN, ISO 11898, 2.0 A/B, SAE J1939 protocol
USB	Available with configuration kit KN-1. For configuration purposes only

BUNDLED SOFTWARE

Programming environment	Strim KN1 kit, C/C++
-------------------------	----------------------

OTHER FEATURES

Diagnostics	Open-circuit or short-circuit (outputs)
Protection	Reversed polarity and short-circuit protected

OPERATING REQUIREMENTS

Supply voltage range	8...32 V
Rated supply voltage	24 V
Idle current	40 mA
Max current	16 A
Operating temperature	-40 ... + 65 °C

ENCLOSURE

Connector type	24 pins Deutsch, Schlemmer case (optional)
Ingress protection	IP54
Housing materials	Aluminum
Housing dimensions	108x102x39 mm
Weight	300 g

Inputs/Outputs configuration

TYPE OF CONFIG	DIN	AIN	CIN	DOUT
Basic config 1	8	0	0	8
Basic config 2	4	4	0	8
Basic config 3	4	0	4	8
Custom config	*	*	*	8

DIN – discrete inputs;

AIN – analog inputs;

CIN – counter inputs;

DOUT – discrete outputs;

* - the number of inputs of each type is determined according to the customer's requirements.

Additional components (supplied separately)



Pin caps



Schlemmer cases



Schlemmer adapters



Sockets



Connecting Technologies

212029 Belarus,
Mogilev, Gabrovskaya str, 17

+375 222 78 90 63

strim@strim-tech.com

<https://strim-tech.com>

STRIM is not responsible for possible errors in catalogs, brochures and other printed materials. The company reserves the right to make changes to products without prior notice. This also applies to products already ordered, unless the changes to be made require a corresponding correction of already agreed specifications.
The name and logo of STRIM is the property of STRIM ALC. All rights reserved.